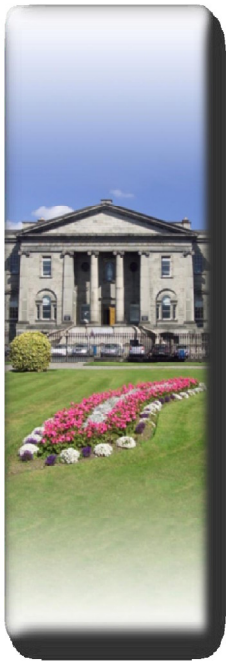


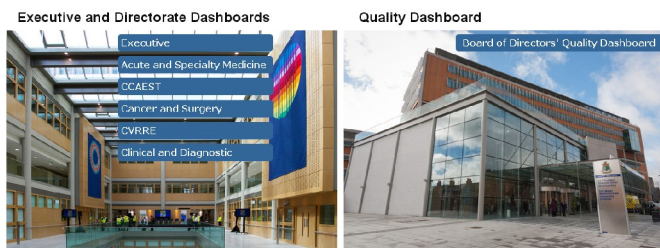
# Executive Dashboards at the Mater Misericordiae University Hospital



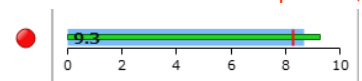
Senior Health Service Management requires immediate and accessible information on key national performance metrics, to enable informed decision-making on a daily basis. Prior to April 2014 this was not readily available at the Mater Misericordiae University Hospital. The Health Diver Solution has been used for several years in the Mater for Reporting and Analytics. Report Palette was used as an interim solution to present multiple KPI's from different environments, but the Hospital needed a more visually appealing and intuitive solution, in other words, an Executive Dashboard.



The Hospital has been using the Health Diver Business Intelligence Solution from Manitex for several years to support the detailed information needs in specific Hospital areas, for example, Inpatients, Outpatients and Waiting Lists. Data from operational systems is automatically extracted, transformed and summarised. It is then delivered as information to the relevant users' desktops around the organisation. End users primarily use the Web based DivePort to access pre-defined reports. This has now been extended with the Executive Dashboard which provides highly focused and integrated information to department heads enabling immediate access to important performance and quality indicators to support informed and timely decision making across the Hospital.



The Hospital Executive Dashboard provides up to date national key performance metrics and hospital-determined supporting internal metrics. The predominant portlets used are "bullet" and "alert" indicator portlets,



as well as marker portlets depicting trends,

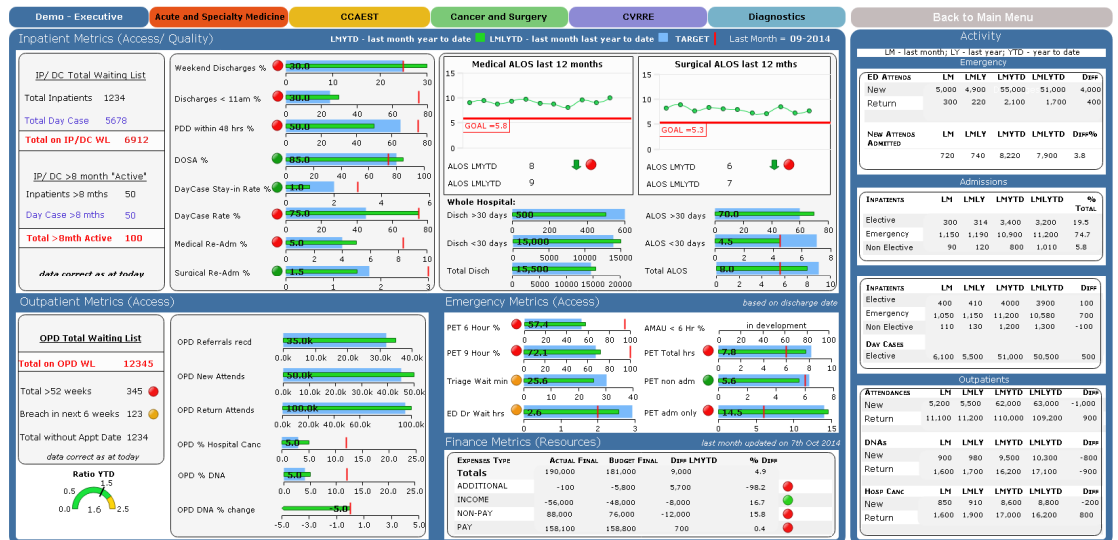


and measures portlets providing detailed statistics.

	LM	LMLY	LMYTD	LMLYTD	% TOTAL
	412	452	3,521	3,657	22.8
	1,217	1,217	11,521	10,347	67.4
	131	167	1,531	1,397	9.8

## Project Scope:

- To stimulate senior management and clinicians to focus on performance improvement
- To provide broader access to management information
- To integrate views of information across various disciplines, departments and entities within the Hospital



ICT Director **Deirdre Hyland** stated that Implementing Health Diver has facilitated the creation of a comprehensive Management Information System. "For me the dashboards have many advantages: they are easily distributable across the organization; they provide an instant high level overview of business critical criteria, and they allow users to focus on immediate priorities and examine pertinent information readily available in DivePort. This facilitates an overall organisational awareness based on the analysis of trends and assessment of progress on initiatives."

## Organisational Background:

- 600 bedded charitable voluntary hospital founded by the Sisters of Mercy in 1861
- University teaching hospital providing: Acute and Tertiary specialist services serving a local catchment area of approximately 200,000

# MANITeX - "Better Information - Better Decisions - Better Care"

Health Diver is powered by The Diver Solution a product of Dimensional Insight Inc.

## About MANITeX:

MANITeX is a solutions focused supplier of Information Technology products and services to the Health market. We offer a range of Services, advanced Technologies and industry strength Applications that will enable our customers to modernise their Information Systems architecture, while maximising their current and future IT investments. **We specialise in delivering practical solutions to meet the real requirements of today in the Health market.**

**FOR FURTHER INFORMATION PLEASE CONTACT :** Manitex Limited, Tel: +353 1 280 3433, Email: [info@manitex.ie](mailto:info@manitex.ie), Web: [www.manitex.ie](http://www.manitex.ie)